

Site Plan
Scale 1:200 @ A3

Issued For	PLANNING
General Notes:	THIS DRAWING HAS BEEN PREPARED BY DS DESIGN SOLUTIONS AND THE DATA CONTAINED HEREIN MAY BE USED OR REPRODUCED ONLY WITH DS DESIGN SOLUTIONS' APPROVAL.

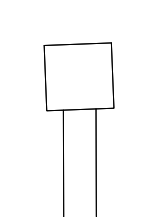
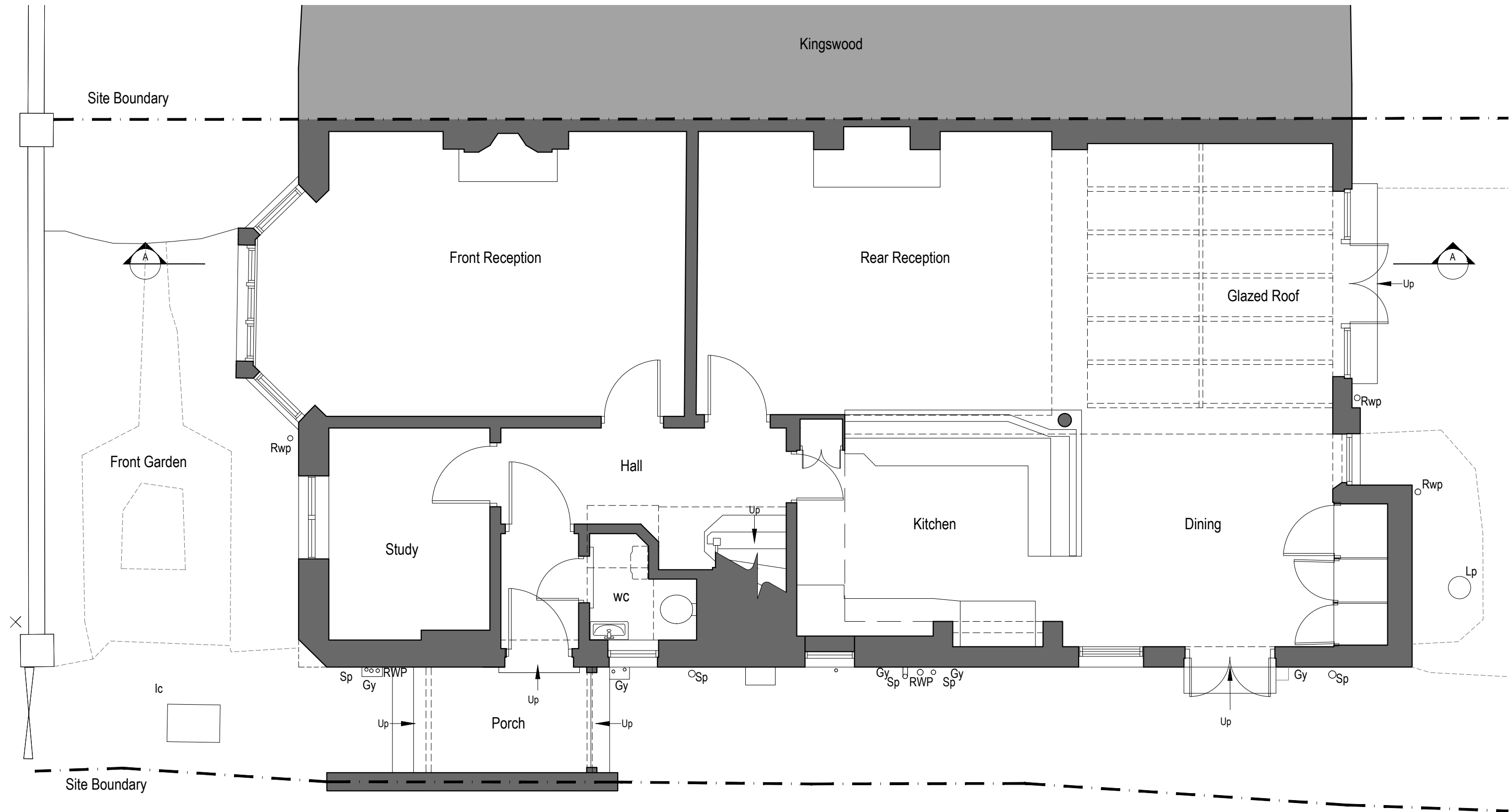
Rev.	Description	Date	Signed	Checked

--

--

Scale	Date	Drawn by	Checked by
1:200@A3	Sep 2014	MEG	DS
Drawing Title	Site Plan		
Project	Epworth-Antrim Road NW3		

 <div>561 Finchley Road London NW3 7BJ Phone 020 7433 3939 Fax 020 7794 4279 www.DesignSolutionsUK.com</div>		
Project no.	Drawing no.	Revision
0295	001	00



Existing Ground Floor Plan
Scale 1:50 @ A3

Issued For	PLANNING
General Notes:	THIS DRAWING HAS BEEN PREPARED BY DS DESIGN SOLUTIONS AND THE DATA CONTAINED HEREIN MAY BE USED OR REPRODUCED ONLY WITH DS DESIGN SOLUTIONS' APPROVAL.

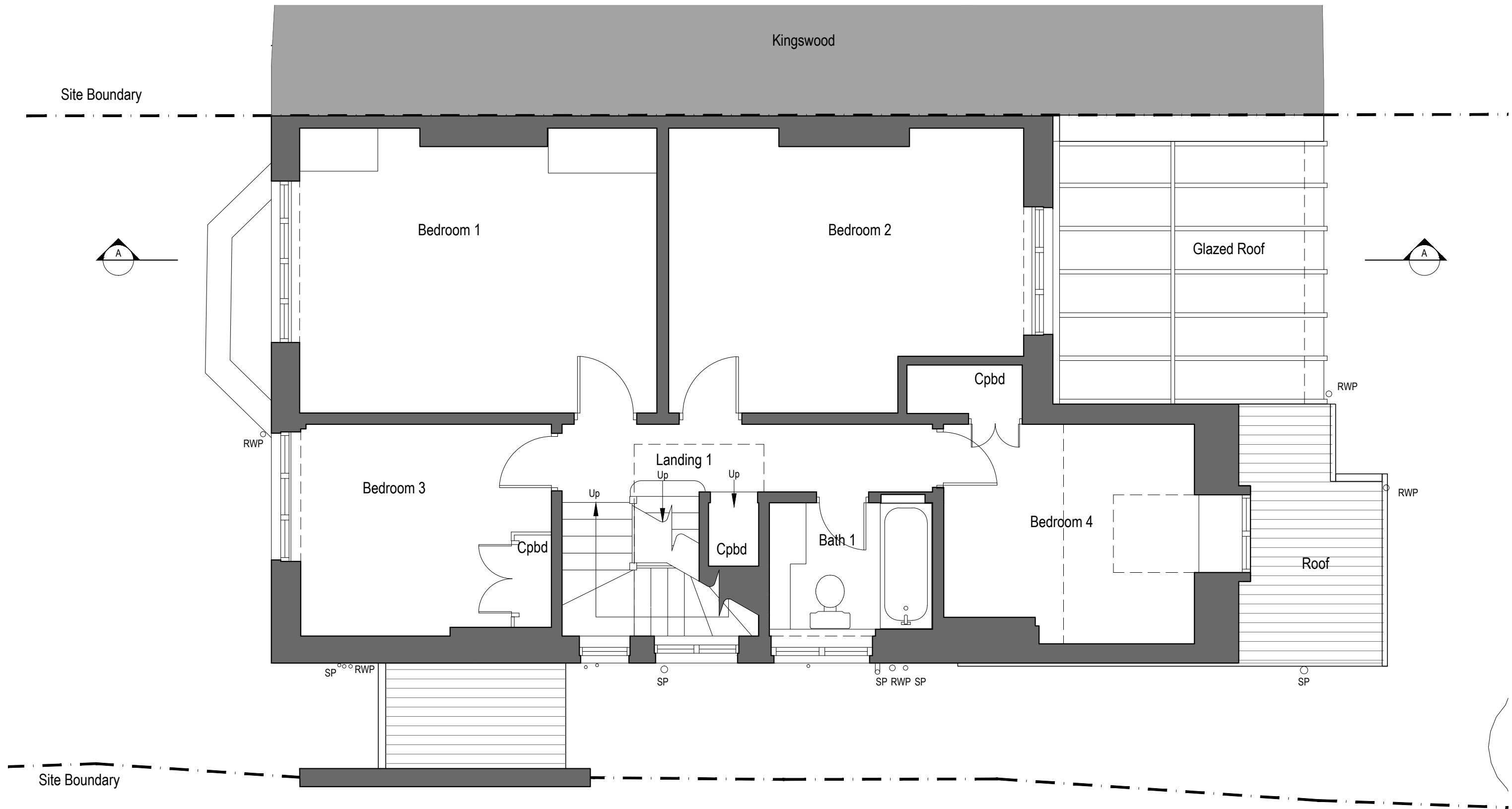
Rev.	Description	Date	Signed	Checked

--

--

Scale	Date	Drawn by	Checked by
1:50@A3	Sep 2014	MEG	DS
Drawing Title			
Existing Ground Floor Plan			
Project			
Epworth-Antrim Road NW3			

 design solutions			561 Finchley Road London NW3 7BJ Phone 020 7433 3939 Fax 020 7794 4279 www.DesignSolutionsUK.com		
Project no.		Drawing no.		Revision	
0295		010		00	



Existing First Floor Plan
Scale 1:50 @ A3

Issued For	PLANNING
General Notes:	THIS DRAWING HAS BEEN PREPARED BY DS DESIGN SOLUTIONS AND THE DATA CONTAINED HEREIN MAY BE USED OR REPRODUCED ONLY WITH DS DESIGN SOLUTIONS' APPROVAL.

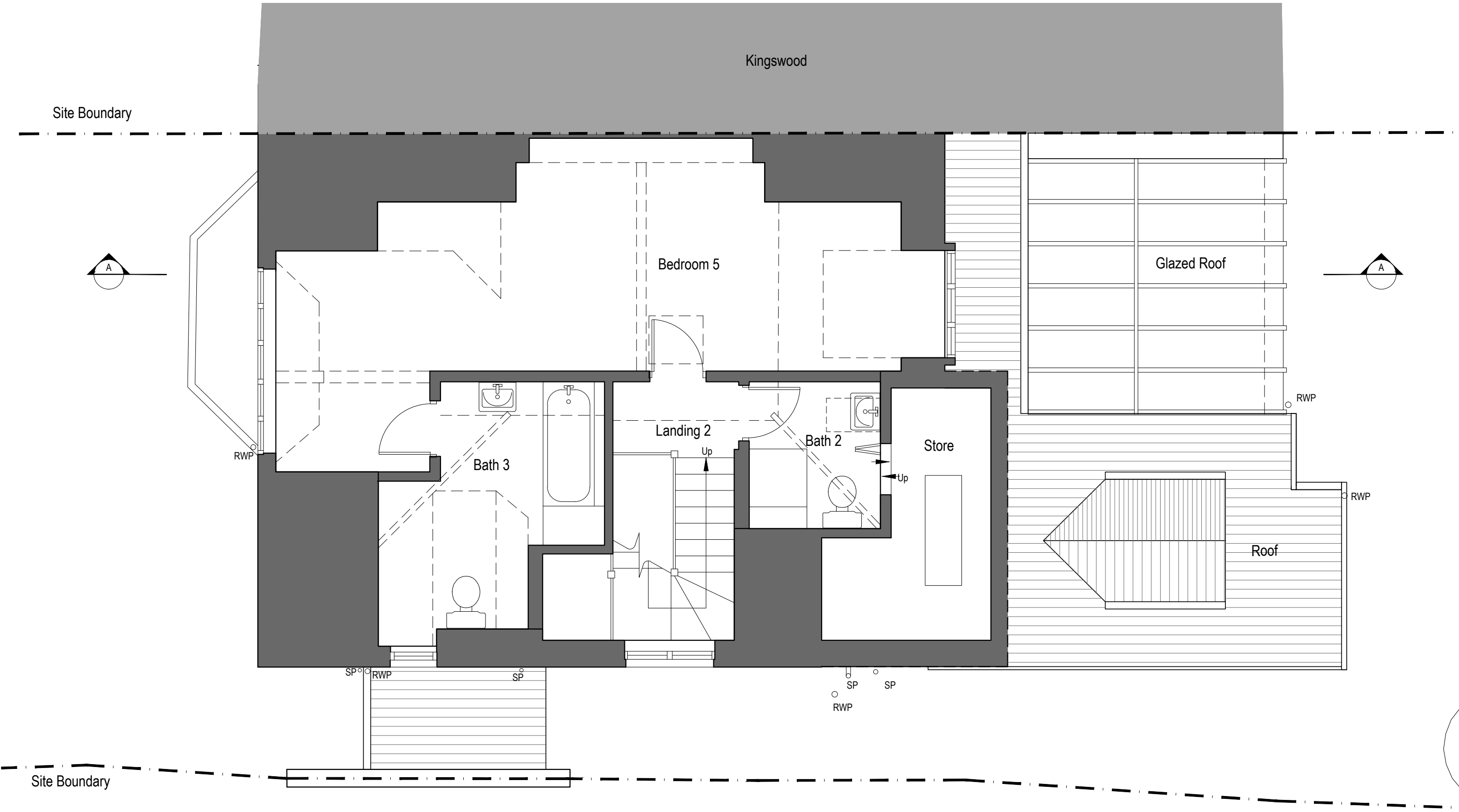
Rev.	Description	Date	Signed	Checked

--

--

Scale	Date	Drawn by	Checked by
1:50@A3	Sep 2014	MEG	DS
Drawing Title			
Existing First Floor Plan			
Project			
Epworth-Antrim Road NW3			

 design solutions			561 Finchley Road London NW3 7BJ Phone 020 7433 3939 Fax 020 7794 4279 www.DesignSolutionsUK.com		
Project no.	Drawing no.	Revision			
0295	011	00			



Existing Second Floor Plan
Scale 1:50 @ A3

Issued For

PLANNING

General Notes:

THIS DRAWING HAS BEEN PREPARED BY DS DESIGN SOLUTIONS AND THE DATA CONTAINED HEREIN MAY BE USED OR REPRODUCED ONLY WITH DS DESIGN SOLUTIONS' APPROVAL.

Rev.	Description	Date	Signed	Checked

--

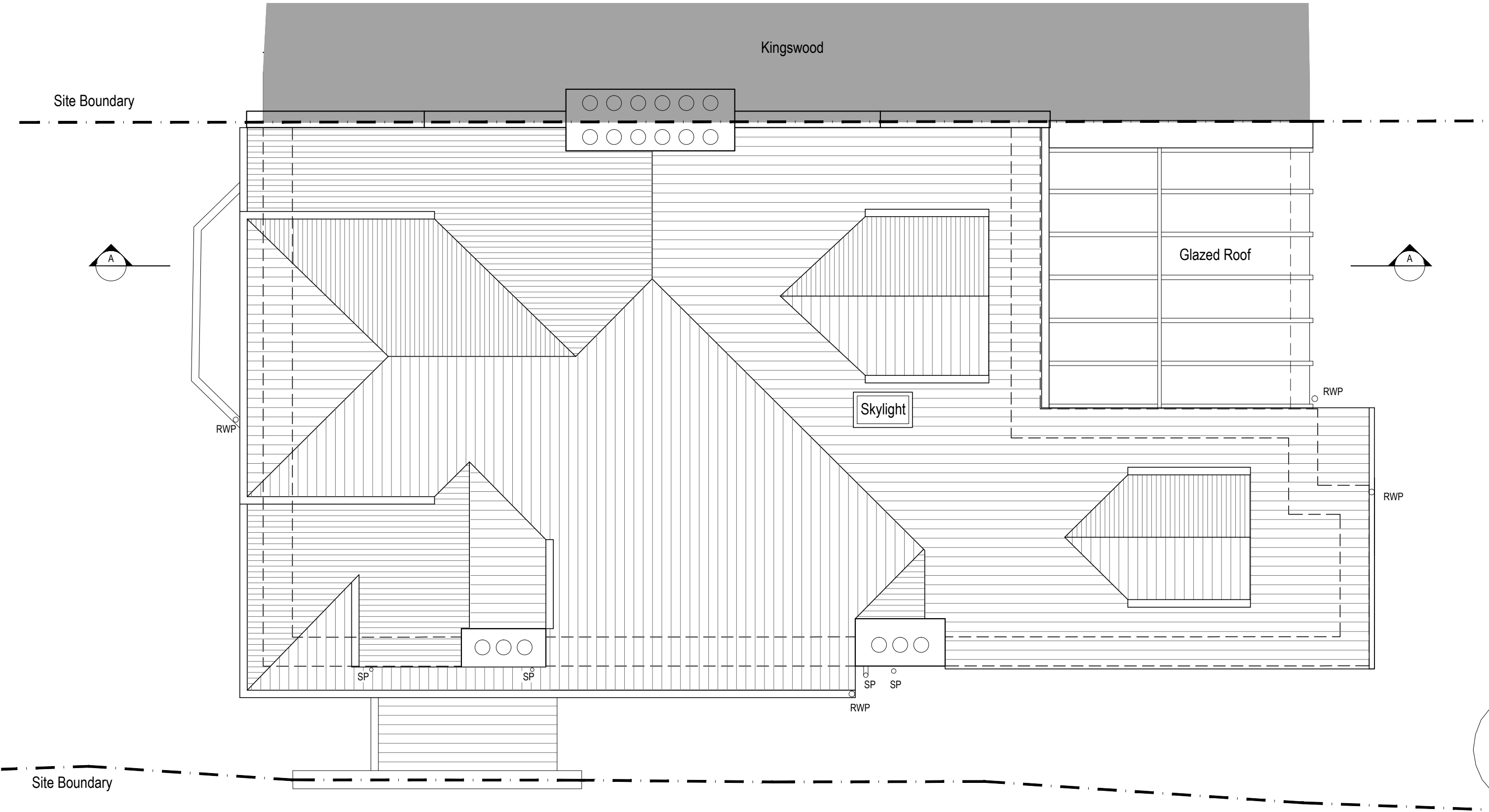
--

Scale	Date	Drawn by	Checked by
1:50@A3	Sep 2014	MEG	DS
Drawing Title			
Existing Second Floor Plan			
Project			
Epworth-Antrim Road NW3			

 design solutions

561 Finchley Road
London NW3 7BJ
Phone 020 7433 3939
Fax 020 7794 4279
www.DesignSolutionsUK.com

Project no.	Drawing no.	Revision
0295	012	00



Existing Roof Plan
Scale 1:50 @ A3

Issued For

PLANNING

General Notes:

THIS DRAWING HAS BEEN PREPARED BY DS DESIGN SOLUTIONS AND THE DATA CONTAINED HEREIN MAY BE USED OR REPRODUCED ONLY WITH DS DESIGN SOLUTIONS' APPROVAL.

Rev.	Description	Date	Signed	Checked

--

--

Scale	Date	Drawn by	Checked by
1:50@A3	Sep 2014	MEG	DS
Drawing Title			
Existing Roof Plan			
Project			
Epworth-Antrim Road NW3			



design solutions

561 Finchley Road
London NW3 7BJ
Phone 020 7433 3939
Fax 020 7794 4279
www.DesignSolutionsUK.com

Project no.

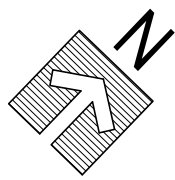
0295

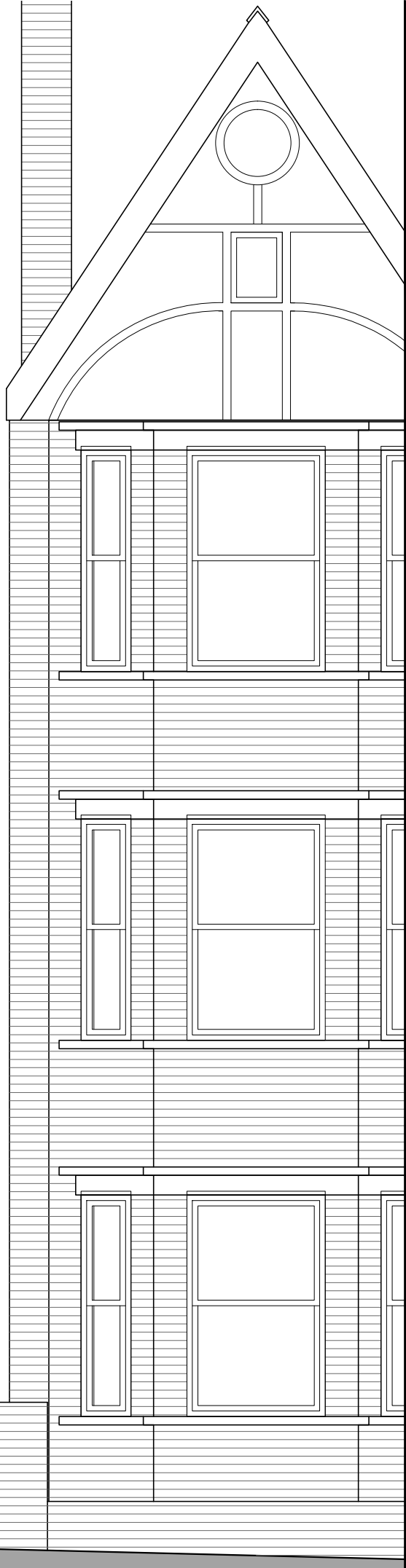
Drawing no.

013

Revision

00





Notes:

1. Do not scale drawings
2. All dimensional discrepancies to be reported to architect
3. The contractor must check all dimensions on site before construction / fabrication

THIS DRAWING HAS BEEN PREPARED BY DS DESIGN SOLUTIONS AND THE DATA CONTAINED HEREIN MAY BE USED OR REPRODUCED ONLY WITH DS DESIGN SOLUTIONS' APPROVAL.

- Notes
- Materials:
1. London Stock Bricks w/ Red Clay Coinage Bricks
 2. Red Clay Bricks
 3. White Render
 4. Dark Grey Slates w/ Terracotta Ridge Tiles
 5. White Painted Timber Frames
 6. Terracotta Chimney Pots

Rev.	Description	Date	Checked
------	-------------	------	---------

Issued For
PLANNING

Project
**Epworth
Antrim Road NW3**

Drawing Title
Existing South West Elevation

DS
design solutions
561 Finchley Road
London NW3 7BJ
Phone 020 7433 3939
Fax 020 7794 4279
www.DesignSolutionsUK.com

North	Scale 1:50@ A3	Drawn by MEG
	Date Sep 2014	Checked by DS
Project no. 0295	Drawing no. 020	Revision 00



Notes:

1. Do not scale drawings
2. All dimensional discrepancies to be reported to architect
3. The contractor must check all dimensions on site before construction / fabrication

THIS DRAWING HAS BEEN PREPARED BY
DS DESIGN SOLUTIONS AND THE DATA CONTAINED
HEREIN MAY BE USED OR REPRODUCED ONLY
WITH DS DESIGN SOLUTIONS' APPROVAL.

- Notes
- Materials:
1. London Stock Bricks w/ Red Clay Coinage Bricks
 2. Red Clay Bricks
 3. White Render
 4. Dark Grey Slates w/ Terracotta Ridge Tiles
 5. White Painted Timber Frames
 6. Terracotta Chimney Pots

Rev.	Description	Date	Checked

Issued For
PLANNING

Project
**Epworth
Antrim Road NW3**

Drawing Title
Existing South East Elevation



561 Finchley Road
London NW3 7BJ
Phone 020 7433 3939
Fax 020 7794 4279
design solutions www.DesignSolutionsUK.com

North	Scale 1:50@ A3	Drawn by MEG
	Date Sep 2014	Checked by DS
Project no. 0295	Drawing no. 021	Revision 00



Notes:

1. Do not scale drawings
2. All dimensional discrepancies to be reported to architect
3. The contractor must check all dimensions on site before construction / fabrication

THIS DRAWING HAS BEEN PREPARED BY
DS DESIGN SOLUTIONS AND THE DATA CONTAINED
HEREIN MAY BE USED OR REPRODUCED ONLY
WITH DS DESIGN SOLUTIONS' APPROVAL.

Notes

Materials:

1. London Stock Bricks w/ Red Clay Coinage Bricks
2. Red Clay Bricks
3. White Render
4. Dark Grey Slates w/ Terracotta Ridge Tiles
5. White Painted Timber Frames
6. Terracotta Chimney Pots

Rev.	Description	Date	Checked
------	-------------	------	---------

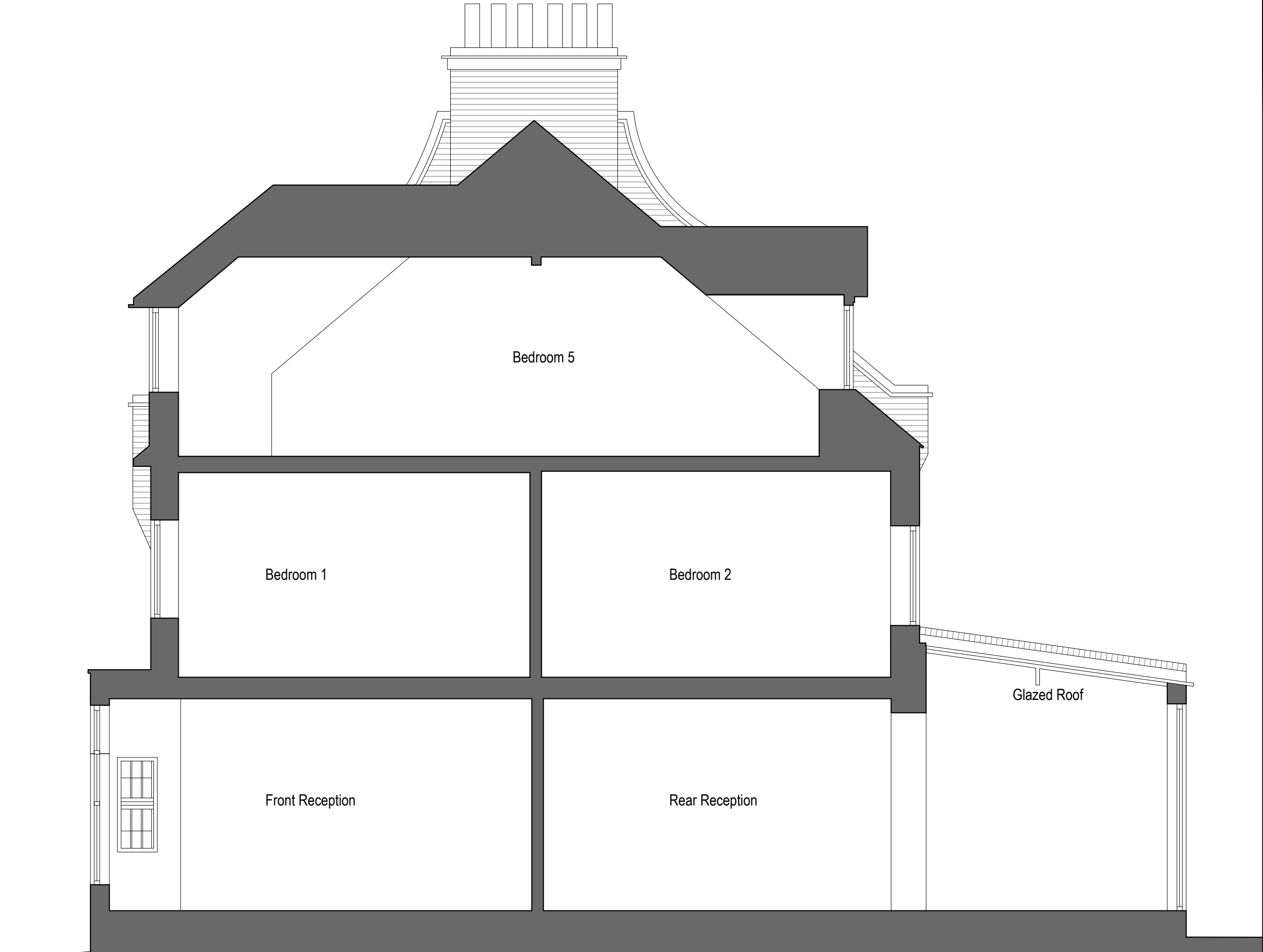
Issued For
PLANNING

Project
**Epworth
Antrim Road NW3**

Drawing Title
Existing North East Elevation

DS
design solutions
561 Finchley Road
London NW3 7BJ
Phone 020 7433 3939
Fax 020 7794 4279
www.DesignSolutionsUK.com

North	Scale 1:50@ A3	Drawn by MEG
	Date Sep 2014	Checked by DS
Project no. 0295	Drawing no. 022	Revision 00



Existing Section AA
Scale 1:100 @ A3

Notes:
1. Do not scale drawings
2. All dimensional discrepancies to be reported to architect
3. The contractor must check all dimensions on site before construction / fabrication

THIS DRAWING HAS BEEN PREPARED BY
DS DESIGN SOLUTIONS AND THE DATA CONTAINED
HEREIN MAY BE USED OR REPRODUCED ONLY
WITH DS DESIGN SOLUTIONS' APPROVAL.

Notes			

Rev.	Description	Date	Checked

Issued For
PLANNING

Project

Epworth
Antrim Road NW3

Drawing Title

Existing Section AA



561 Finchley Road
London NW3 7BJ
Phone 020 7433 3939
Fax 020 7794 4279
design solutions www.DesignSolutionsUK.com

North	Scale 1:50@ A3	Drawn by MEG
	Date Sep 2014	Checked by DS
Project no. 0295	Drawing no. 030	Revision 00