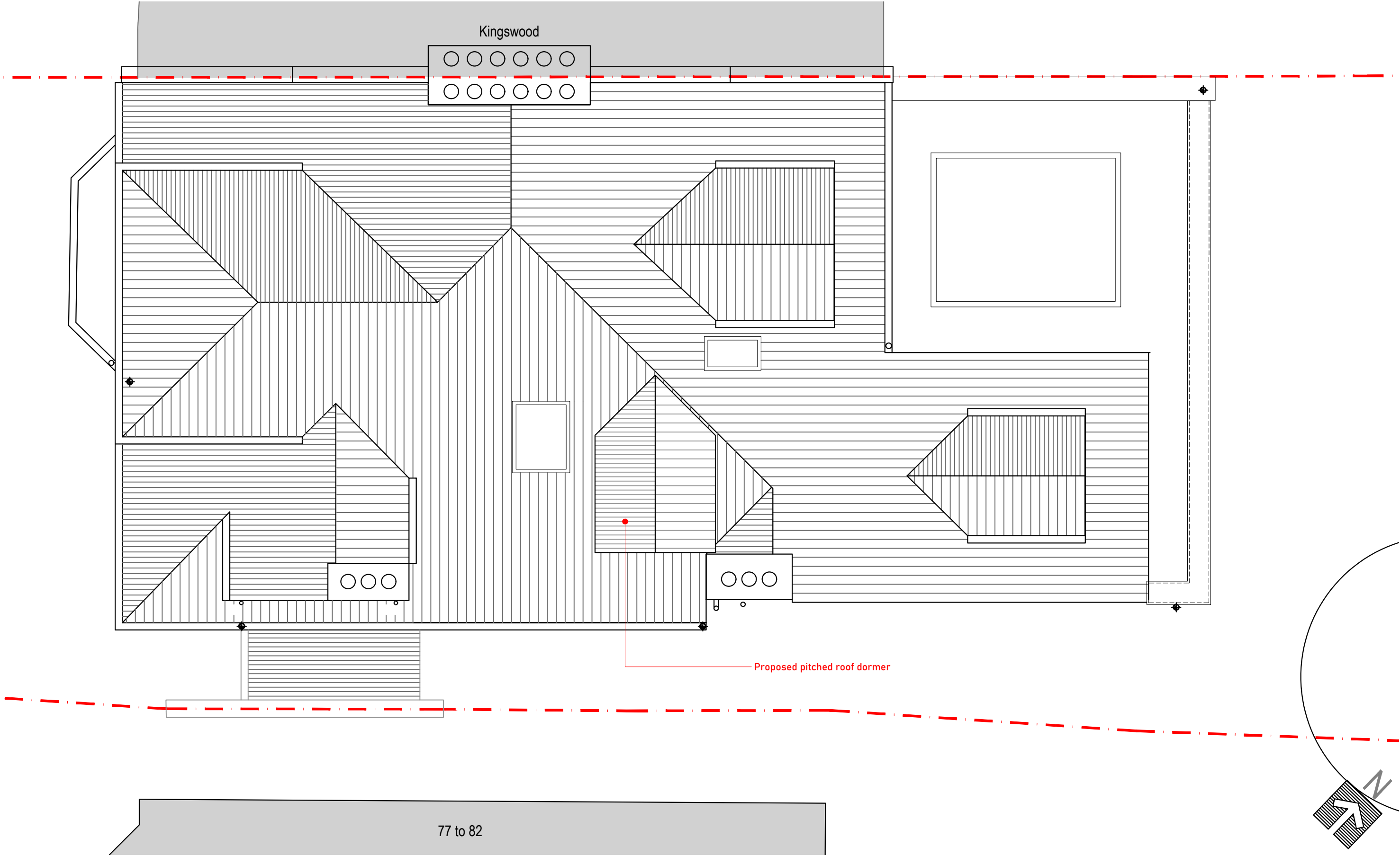


Issued For <div>PLANNING</div>		<table><tr><th>Rev.</th><th>Description</th><th>Date</th><th>Signed</th><th>Checked</th></tr><tr><td></td><td></td><td></td><td></td><td></td></tr></table>					Rev.	Description	Date	Signed	Checked						<div><div><div></div><div></div><div></div><div></div><div></div></div><div>02.5m</div></div>				<table><tr><td>A3 Scale 1:50</td><td>Date 25.06.25</td><td>Drawn by AL</td><td>Checked by ME</td></tr></table>		A3 Scale 1:50	Date 25.06.25	Drawn by AL	Checked by ME	<div><div>Drawing Title PROPOSED Second Floor Plan</div><div>Project Epworth, Antrim Road NW3</div></div>		<div><div>Project no. 25/335</div><div>Drawing no. 202</div><div>Revision 00</div></div>		
Rev.	Description	Date	Signed	Checked																											
A3 Scale 1:50	Date 25.06.25	Drawn by AL	Checked by ME																												
General Notes: THIS DRAWING HAS BEEN PREPARED BY MICHAEL EALES ARCHITECTS AND THE DATA CONTAINED HEREIN MAY BE USED OR REPRODUCED ONLY WITH MICHAEL EALES ARCHITECTS' APPROVAL.											<div><div>ME</div><div>ARCHITECTS</div><div>UNIT 201 Media House, Sopers Road, Potters Bar EN6 4RY T - 07764 496 345 E - info@me-architects.co.uk</div></div>																				



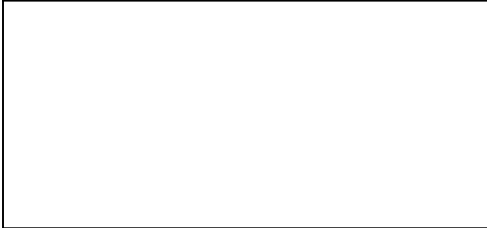
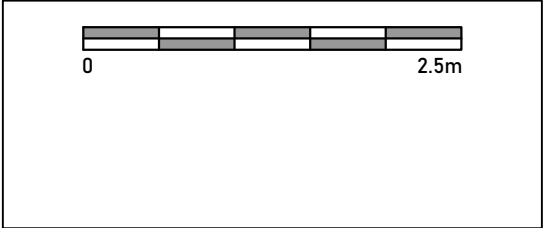
Issued For

PLANNING

General Notes:

THIS DRAWING HAS BEEN PREPARED BY MICHAEL EALES ARCHITECTS AND THE DATA CONTAINED HEREIN MAY BE USED OR REPRODUCED ONLY WITH MICHAEL EALES ARCHITECTS' APPROVAL.

Rev.	Description	Date	Signed	Checked



A3 Scale 1:50	Date 25.06.25	Drawn by AL	Checked by ME
Drawing Title PROPOSED Roof Plan			
Project Epworth, Antrim Road NW3			

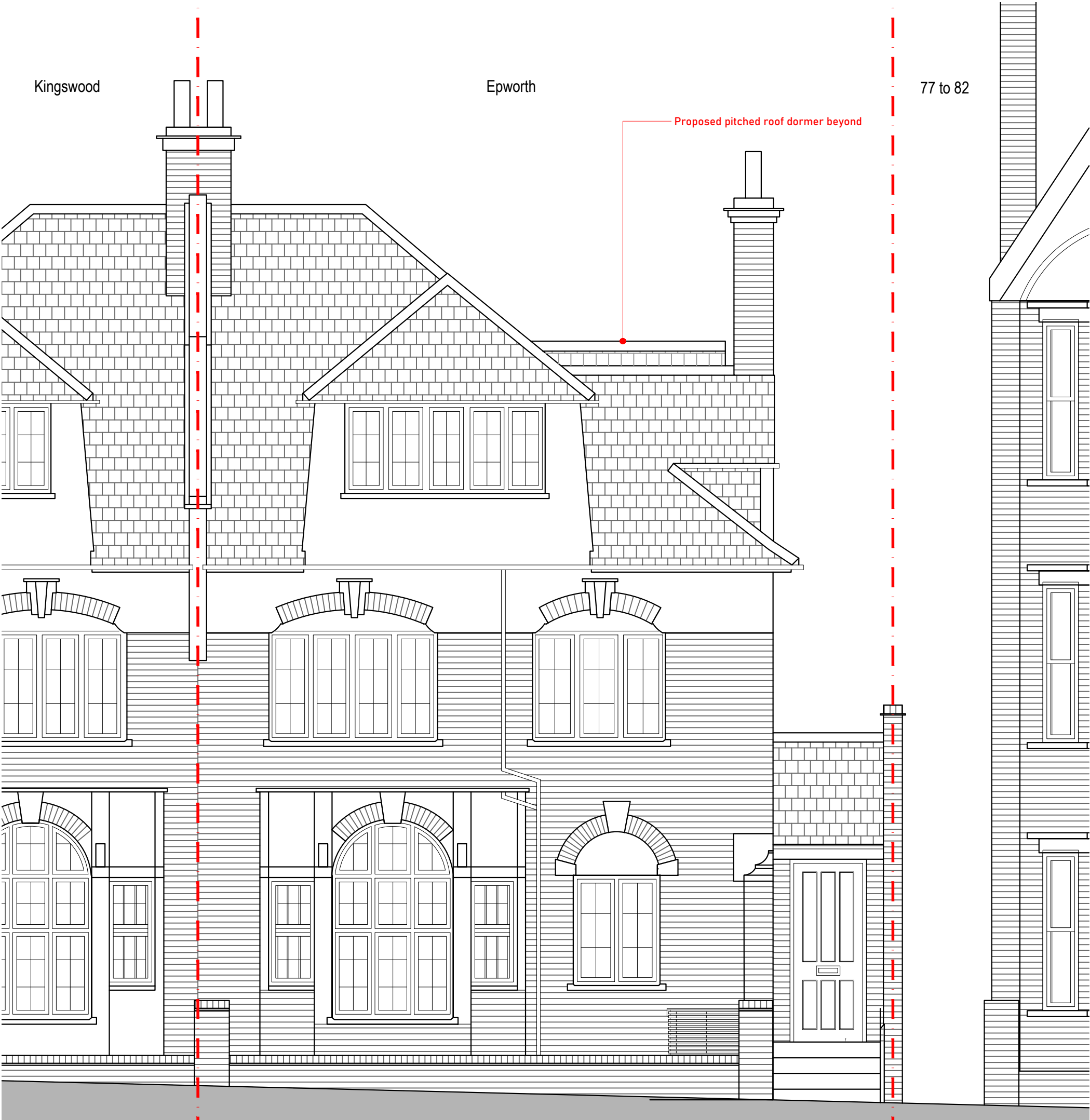
ME ARCHITECTS

UNIT 201 Media House,  
Sopers Road, Potters Bar EN6 4RY  
T - 07764 496 345  
E - info@me-architects.co.uk

Project no.  
25/335

Drawing no.  
203

Revision  
00



Issued For

PLANNING

General Notes:

THIS DRAWING HAS BEEN PREPARED BY MICHAEL EALES ARCHITECTS AND THE DATA CONTAINED HEREIN MAY BE USED OR REPRODUCED ONLY WITH MICHAEL EALES ARCHITECTS' APPROVAL.

Rev.	Description	Date	Signed	Checked

A3 Scale

1:50

Date

25.06.25

Drawn by

AL

Checked by

ME

Drawing Title

PROPOSED  
Front Elevation

Project

Epworth, Antrim Road NW3

ME

ARCHITECTS

113 Fore Street, Hertford  
Hertfordshire, SG14 1AS

T - 07764 496 345  
E - info@me-architects.co.uk

Project no.

20/006

Drawing no.

211

Revision

00



Issued For	<b>PLANNING</b>
General Notes: THIS DRAWING HAS BEEN PREPARED BY MICHAEL EALES ARCHITECTS AND THE DATA CONTAINED HEREIN MAY BE USED OR REPRODUCED ONLY WITH MICHAEL EALES ARCHITECTS' APPROVAL.	

Rev.	Description	Date	Signed	Checked

A3 Scale 1:50	Date 25.06.25	Drawn by AL	Checked by ME
Drawing Title <b>PROPOSED Rear Elevation</b>			
Project Epworth, Antrim Road NW3			

<b>ME</b> ARCHITECTS 113 Fore Street, Hertford Hertfordshire, SG14 1AS T - 07764 496 345 E - info@me-architects.co.uk		
Project no. <b>20/006</b>	Drawing no. <b>212</b>	Revision <b>00</b>

